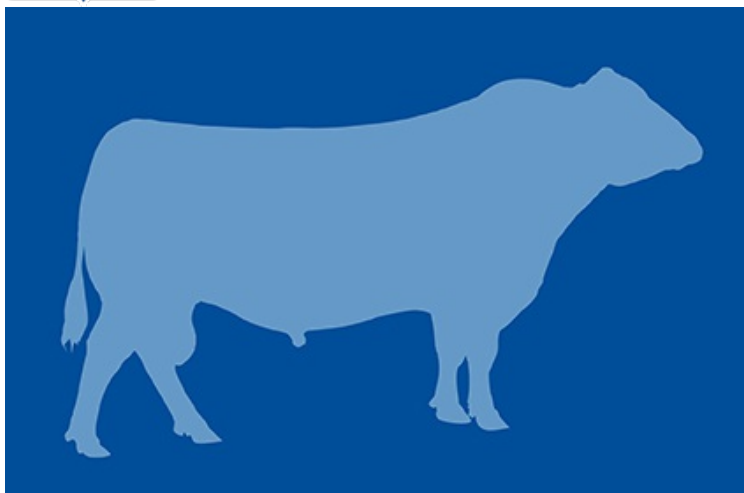




29AN1652 3F EMBLAZON



CALVING ★★★
EASE

- _____ D H D TRAVELER 6807
- _____ O C C EMBLAZON 854E
- _____ DIXIE ERICA OF C H 1019
- _____ PINE CREEK TRAVELER 124-1107
- _____ TFR EVER PRINCESS 1635
- _____ ALC PRINCESS 6037

3F EMBLAZON 3652 AAA 14679694 Born 09/24/2003
Owned by: Three Forks Ranch, OK; ABS Global, Inc., WI

Trait	CED	BW	WW	YW	RADG	DMI	YH	SC	DOC	HPG	CEM	Milk	Hd/Dts	MW	MH	CW	Marb	REA	FAT	C/U Pg	
EPD																					
Acc																					
RANK																					

Trait	\$M	\$W	\$F	\$G	Claw	Angle	\$B
Index							
RANK							

TOP 35%