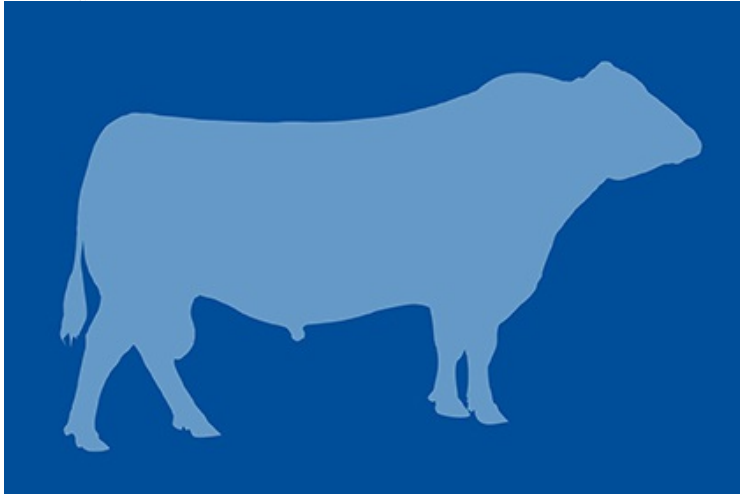




# 29AN1528 DECISION



## Super Phenotype and Curve Bender Appeal

✓ Heavy muscled, easy fleshing 8180 son backed by two of the breed's most powerful cow families

**CALVING EASE** ★★★

**CARCASS MERIT**

- G D A R TRAVELER 71

---

- SITZ TRAVELER 8180

---

- SITZ EVERELDA ENTENSE 1137

---

- LEACHMAN PROMPTER

---

- WOODHILL EVERGREEN 810

---

- GT MISS TRAVELER 58

---

**TWIN VALLEY DECISION 3987**      AAA 12985016      Born 11/18/1997

Trait	CED	BW	WW	YW	RADG	DMI	YH	SC	DOC	HPG	CEM	Milk	Hd/Dts	MW	MH	CW	Marb	REA	FAT	C/U Pg
EPD	+7	+1.8	+31	+67	+16	+47	+0.5	+0.62	+13	+13.4	+14	+22		+51	+0.5	+27	+40	+0.3	+0.30	
Acc	.59	.82	.75	.68	.27	.27	.48	.50	.37	.21	.43	.59	40	.46	.45	.33	.43	.39	.41	0
RANK													68							

Trait	\$M	\$W	\$F	\$G	Claw	Angle	\$B
Index		+18.34	+13.26	+21.44			+78.52
RANK							

08/12/2016 **TOP 35%**