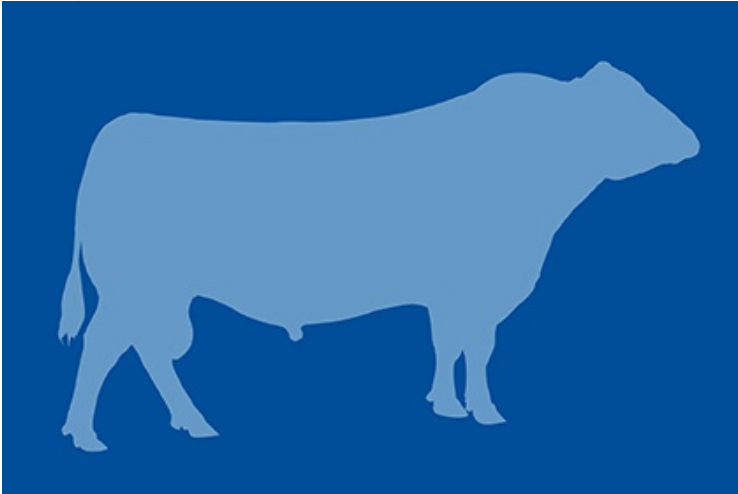




# 29AN1757 PROGRAM



**HA PROGRAM 5652** AAA 15161251 Born 03/03/2005  
 Owned by: Hinman Angus LLC, MT; Bakers LEMAR Angus Ranch, SD; Hal & Lois Schudel, OR; Austin Angus, ND; Sodak Angus, SD; ABS Global, Inc, WI

## Get With the Program

- ✓ Low birth weight, calving ease bull with excellent maternal value
- ✓ High customer satisfaction sire whose progeny have been rancher favorites in sales across the country
- ✓ Balanced trait 'no holes' EPD profile that will complement a wide range of pedigrees
- ✓ From the same program as IMAGE MAKER

**CALVING EASE** ★★★

**CARCASS MERIT** 🍖🍖🍖

- C A FUTURE DIRECTION 5321
- HA FUTURE DIRECTION 3540
- H A 4167 LADY 1013
- SITZ ALLIANCE 6595
- HA BLACKCAP LADY 2782
- H A BLACKCAP LADY 5166

| SIRE ALLIANCE      | EPD     | RANK |
|--------------------|---------|------|
| INTAKE (lb/day)    | +.23    |      |
| ADG (lb/day)       | +.05    | 30%  |
| EFFICIENCY INDEX   | +2.50   |      |
| TOTAL PROFIT INDEX | +55.36  | 35%  |
| MATERNAL INDEX     | +274.11 | 25%  |



| Trait       | CED | BW   | WW  | YW  | RADG | DMI  | YH   | SC    | DOC | HPG   | CEM | Milk | Hd/Dts | MW  | MH   | CW  | Marb | REA | FAT   | C/U Pg |
|-------------|-----|------|-----|-----|------|------|------|-------|-----|-------|-----|------|--------|-----|------|-----|------|-----|-------|--------|
| <b>EPD</b>  | +9  | +0.8 | +56 | +97 | +29  | -.02 | +0.6 | +0.76 | +12 | +11.9 | +9  | +27  |        | +34 | +0.5 | +33 | +48  | +63 | -.032 |        |
| <b>Acc</b>  | .87 | .96  | .95 | .93 | .39  | .39  | .91  | .92   | .88 | .55   | .87 | .90  | 350    | .77 | .74  | .72 | .70  | .66 | .70   | 41     |
| <b>RANK</b> | 30% | 40%  | 35% | 40% | 10%  | 30%  | 30%  | 50%   | 65% | 30%   | 45% | 30%  | 1315   | 40% | 25%  | 55% | 50%  | 25% | 5%    |        |

| Trait        | \$M | \$W    | \$F    | \$G    | Claw | Angle | \$B     |
|--------------|-----|--------|--------|--------|------|-------|---------|
| <b>Index</b> |     | +65.14 | +60.54 | +38.98 |      |       | +124.99 |
| <b>RANK</b>  |     | 15%    | 35%    | 30%    |      |       | 40%     |

09/28/2018 **TOP 35%**